

West Central Steel



**110 19th Street NW
P.O. Box 1178
Willmar, Minnesota 56201**

**(320) 235-4070
1-800-992-8853
1-800-328-8994**

Full Service Warehouse

**3-D LASER
SHEARING
BREAKING
FLAME CUTTING
PLASMA CUTTING
PLASMA FULL CONTOUR BEVEL
PLATE – LASER CUTTING
“DRY” SAW CUTTING
TRUCKING**

DIRECT “FAX” (320) 235-1816

3D LASER CUTTING



3D Laser Cutting and up to 1/2" tapping in tube, pipe and structural shapes with maximum dimensions of 3/4" thick, 6" round or square, and 26 feet long. Automatically loads, feeds, laser cuts, taps and unloads parts. FG-CADCAM is the Mazak post processor. Solid Works is our 3D programming software. We can convert most DWG or DXF files plus other 3D software formats.

West Central Steel, Inc.

PHONE: 320-235-4070 DIRECT SALES FAX: 320-235-1816
1-800-992-8853 1-800-328-8994

This steel reference book is based on theoretical weights:

INDEX PAGE

Angles	4-5
Beams	
“M”, Jr., H or Light	14
“S”	15
Wide Flange	16-19
Channels.....	6-7
Decimal Equivalents	53-54
Diamond-Grip® and Rail Cap	49
Expanded Metal	47-48
Bar Grating	46
Flats	
Hot Rolled Strips	8
Hot Rolled Flats.....	9-11
Formulas	55-56
Grader Blades	50
Pipe	
Extra Heavy and HI-Y 50.....	31
Light Wall & Standard.....	30
Plates	
Hot Rolled.....	26-27
Floor Plate.....	29
Abrasion Resisting.....	28
ReBar	
Reinforcing	45
Mesh.....	(Inquire on sizes)
Rounds	
Hot Rolled.....	12
Cold Rolled 1018.....	20
Cold Rolled 1045.....	21
Stress 1144.....	22
Saw and Fabricating Information	3
Sheets	
Hot Rolled.....	24-25
Squares	
Hot Rolled.....	13
Cold Rolled 1018 and 1215.....	23
Tees	14
Tubing	
Square	32-35
Rectangular	36-39
Black and Red-kote.....	40-44
Weights and Measures.....	51-52

West Central Steel, Inc.

PHONE: 320-235-4070 DIRECT SALES FAX: 320-235-1816
1-800-992-8853 1-800-328-8994

FABRICATING CAPABILITIES

SHEARING

ACCURPRESS SHEAR (1/2" X 144") 48" BACKSTOP
CNC BACK-GAUGING

PRESS BRAKES

ACCURPRESS BRAKE (400 TON, 1/2" X 168")
DIES RANGE FROM 1/2" - 6" (8 X TK.)

OXY-FUEL/PLASMA CUTTING

ESAB - SABRE 3000 GANTRY SHAPE CUTTING MACHINE
SERIES 2000 CNC COLOR GRAPHICS CONTROL SYSTEM
ULTRA LIFE 300 PLASMA SYSTEM (CUTS UP TO 1/2"
THICK ON MILD STEEL)
PNEUMATIC PUNCH MARKER STATION
FOUR OXY-FUEL CUTTING STATIONS (CUTS UP TO 5"
THICK ON MILD STEEL)
153" X 348" CUTTING BED

LASER

6000 WATT TANAKA LASER CUTTER WITH 8' X 60'
CUTTING BED. CUTS UP TO 1" THICK ON MILD STEEL

SAW CUTTING

MARVEL 25 SAW - WITH 25" X 28" CUT CAPACITY,
MITER CUTS TO 45 DEGREES EITHER DIRECTION,
POWER LENGTH GAUGING

MARVEL 81 SAW - WITH 18" X 20" CUT CAPACITY,
MITER CUTS TO 45 DEGREES EITHER DIRECTION,
POWER LENGTH GAUGING

HYD-MECH SAW MA-20A - WITH 20" X 30" CUT
CAPACITY. MITER CUTS UP TO 60 DEGREES IN ONE
DIRECTION, 33" SHUTTLE

West Central Steel, Inc.

PHONE: 320-235-4070 DIRECT SALES FAX: 320-235-1816
 1-800-992-8853 1-800-328-8994

L ANGLES - Bar Sizes

Conforms to ASTM A36
 Stock Lengths: 20 and 40 ft.

SIZE IN INCHES		WEIGHT PER FT. IN LBS.		SIZE IN INCHES		WEIGHT PER FT. IN LBS.					
1/2	X	1/2	X	1/8	.38	1 3/4	X	1 3/4	X	3/16	2.12
5/8	X	5/8	X	1/8	.48					1/4	2.77
3/4	X	3/4	X	1/8	.59	2	X	1 1/4	X	3/16	1.96
7/8	X	7/8	X	1/8	.70					1/4	2.55
1	X	5/8	X	1/8	.64	2	X	1 1/2	X	1/8	1.44
1	X	3/4	X	1/8	.70					3/16	2.12
1	X	1	X	1/8	.80					1/4	2.77
				3/16	1.16	2	X	2	X	1/8	1.65
				1/4	1.49					3/16	2.44
1 1/8	X	1 1/8	X	1/8	.90					1/4	3.19
1 1/4	X	1 1/4	X	1/8	1.01					5/16	3.92
				3/16	1.48					3/8	4.70
				1/4	1.92	2 1/2	X	1 1/2	X	3/16	2.44
1 3/8	X	7/8	X	1/8	.91					1/4	3.19
				3/16	1.32					5/16	3.92
1 1/2	X	1 1/4	X	3/16	1.64	2 1/2	X	2	X	3/16	2.75
1 1/2	X	1 1/2	X	1/8	1.23					1/4	3.62
				3/16	1.80					5/16	4.50
				1/4	2.34					3/8	5.30
				3/8	3.35	2 1/2	X	2 1/2	X	3/16	3.07
1 3/4	X	1 1/4	X	1/8	1.23					1/4	4.10
				3/16	1.80					5/16	5.00
				1/4	2.34					3/8	5.90
1 3/4	X	1 3/4	X	1/8	1.44					1/2	7.70

West Central Steel, Inc.

PHONE: 320-235-4070 DIRECT SALES FAX: 320-235-1816
 1-800-992-8853 1-800-328-8994

L ANGLES - Structural

Conforms to ASTM A36

Stock Lengths: 20 and 40 ft.

SIZE IN INCHES				WEIGHT PER FT. IN LBS.		SIZE IN INCHES				WEIGHT PER FT. IN LBS.	
L3	X	2	X	3/16	3.07	L5	X	3	X	1/4	6.60
				1/4	4.10					5/16	8.20
				5/16	5.00					3/8	9.80
				3/8	5.90					1/2	12.80
				1/2	7.70						
L3	X	2 1/2	X	1/4	4.50	L5	X	3 1/2	X	1/4	7.00
				5/16	5.60					5/16	8.70
				3/8	6.60					3/8	10.40
				1/2	8.50					1/2	13.60
L3	X	3	X	3/16	3.71	L5	X	5	X	5/16	10.30
				1/4	4.90					3/8	12.30
				5/16	6.10					1/2	16.20
				3/8	7.20					5/8	20.00
				1/2	9.40					3/4	23.60
L3 1/2	X	2 1/2	X	1/4	4.90	L6	X	3 1/2	X	5/16	9.80
				5/16	6.10					3/8	11.70
				3/8	7.20					1/2	15.30
				1/2	9.40						
L3 1/2	X	3	X	1/4	5.40	L6	X	4	X	5/16	10.30
				5/16	6.60					3/8	12.30
				3/8	7.90					1/2	16.20
				1/2	10.20					5/8	20.00
L3 1/2	X	3 1/2	X	1/4	5.80	L6	X	6	X	3/8	14.90
				5/16	7.20					1/2	19.60
				3/8	8.50					5/8	24.20
				1/2	11.10					3/4	28.70
										1	37.40
L4	X	3	X	1/4	5.80	L7	X	4	X	3/8	13.60
				5/16	7.20					1/2	17.90
				3/8	8.50					3/4	26.20
				1/2	11.10					1/2	19.60
				5/8	13.60					3/4	28.70
L4	X	3 1/2	X	1/4	6.20	L8	X	4	X	1/2	19.60
				5/16	7.70					3/4	28.70
				3/8	9.10					1/2	23.00
				1/2	11.90					3/4	33.80
L4	X	4	X	1/4	6.60	L8	X	8	X	1	44.20
				5/16	8.20					1/2	26.40
				3/8	9.80					5/8	32.70
				1/2	12.80					3/4	38.90
				5/8	15.70					1	51.00
				3/4	18.50						

West Central Steel, Inc.

PHONE: 320-235-4070 DIRECT SALES FAX: 320-235-1816
1-800-992-8853 1-800-328-8994

C CHANNELS - Bar Size

Conforms to ASTM A36

Stock Lengths: 20

SIZE IN INCHES		WEIGHT PER FT. IN LBS.		SIZE IN INCHES		WEIGHT PER FT. IN LBS.	
3/4	X 3/8	X 1/8	.56	1 1/2	X 3/4	X 1/8	1.17
1	X 3/8	X 1/8	.68	2	X 1/2	X 1/8	1.43
1	X 1/2	X 1/8	.84	2	X 9/16	X 3/16	1.86
1 1/8	X 9/16	X 3/16	1.16	2	X 5/8	X 1/4	2.28
1 1/4	X 1/2	X 1/8	1.01	2	X 1	X 1/8	1.59
1 1/2	X 1/2	X 1/8	1.12	2	X 1	X 3/16	2.32
1 1/2	X 9/16	X 3/16	1.44	2 1/2	X 5/8	X 3/16	2.27

C CHANNELS - Standard

Conforms to ASTM A36

Stock Lengths: 20 and 40 ft.

DEPTH INCHES	WEB THICKNESS IN INCHES	FLANGE WIDTH IN INCHES	DEPTH INCHES	WEB THICKNESS IN INCHES	FLANGE WIDTH IN INCHES		
C3	X 3.5	.130	1.375	C8	X 11.5	.220	2.260
	4.1	.170	1.410		13.75	.303	2.343
	5.0	.258	1.498		18.75	.487	2.527
	6.0	.356	1.596	C9	X 13.4	.233	2.433
C4	X 4.5	.137	1.584		15.0	.285	2.485
	5.4	.184	1.584		20.0	.448	2.648
	7.25	.321	1.721	C10	X 15.3	.240	2.600
C5	X 6.7	.190	1.750		20.0	.379	2.739
	9.0	.325	1.885		25.0	.526	2.886
C6	X 8.2	.200	1.920		30.0	.673	3.033
	10.5	.314	2.034	C12	X 20.7	.282	2.942
	13.0	.437	2.157		25.0	.387	3.047
C7	X 9.8	.210	2.090		30.0	.510	3.170
	12.25	.314	2.194	C15	X 33.9	.400	3.400
	14.75	.419	2.299		40.0	.520	3.520
					50.0	.716	3.716

West Central Steel, Inc.

PHONE: 320-235-4070 DIRECT SALES FAX: 320-235-1816
1-800-992-8853 1-800-328-8994

C MC CHANNELS - Jr. Channels

Conforms to ASTM A36

Lightweight channels rolled specially for stair stringers, although useful for many other purposes requiring a light structural channel.

DEPTH IN INCHES		WIDTH WT/FT/LBS	WEB	FLANGE
			THICKNESS IN INCHES	THICKNESS IN INCHES
MC8	X	8.5	.180	1.875
MC10	X	6.5	.152	1.127
		8.4	.170	1.500
MC12	X	10.6	.190	1.500

C MC CHANNELS - Ship & Car

Conforms to ASTM A36

Stock Lengths: 20 and 40 ft.

DEPTH INCHES		WEB THICKNESS IN INCHES	FLANGE WIDTH IN INCHES	DEPTH INCHES		WEB THICKNESS IN INCHES	FLANGE WIDTH IN INCHES		
WT/FT/LBS				WT/FT/LBS					
MC3	X	7.1	.312	1.938	MC10	X	28.5	.425	3.950
MC4	X	13.8	.500	2.500			33.6	.575	4.100
MC6	X	12.0	.310	2.497			41.1	.796	4.321
		15.1	.314	3.000	MC12	X	31.0	.370	3.670
		15.3	.340	3.500			35.0	.467	3.767
		16.3	.375	3.000			40.0	.590	3.890
		18.0	.379	3.504			50.0	.835	4.135
MC7	X	19.1	.352	3.452	MC13	X	31.8	.375	4.000
		22.7	.503	3.603			35.0	.447	4.072
MC8	X	18.7	.353	2.978			50.0	.787	4.412
		20.0	.400	3.025	MC18	X	42.7	.450	3.950
		21.4	.375	3.450			45.8	.500	4.000
		22.8	.427	3.502			51.9	.600	4.100
MC9	X	25.4	.450	3.500			58.0	.700	4.200
MC10	X	22.0	.312	3.500					

West Central Steel, Inc.

PHONE: 320-235-4070 DIRECT SALES FAX: 320-235-1816
1-800-992-8853 1-800-328-8994

Low Carbon HOT ROLLED STRIP

Size In Inches		Weight Per Ft. In Lbs.	Size In Inches		Weight Per Ft. In Lbs.		
.125	X	1/2	.213	.1875	X	1/2	.319
(1/8")		5/8	.266	(3/16")		5/8	.399
		3/4	.319			3/4	.479
		7/8	.372			7/8	.599
		1	.425			1	.638
		1 1/8	.478			1 1/8	.717
		1 1/4	.531			1 1/4	.797
		1 3/8	.584			1 3/8	.877
		1 1/2	.638			1 1/2	.956
		1 3/4	.744			1 3/4	1.12
		2	.850			2	1.28
		2 1/4	.956			2 1/4	1.43
		2 1/2	1.06			2 1/2	1.59
		2 3/4	1.17			2 3/4	1.75
		3	1.28			3	1.91
		3 1/4	1.38			3 1/4	2.07
		3 1/2	1.49			3 1/2	2.23
		4	1.70			4	2.55
		4 1/2	1.91			4 1/2	2.87
		5	2.13			5	3.19
		5 1/2	2.34			5 1/2	3.51
		6	2.55			6	3.83
		7	2.98			7	4.46
		8	3.40			8	5.10
		12	5.10			10	6.38
						11	7.01
						12	7.65

West Central Steel, Inc.

PHONE: 320-235-4070 DIRECT SALES FAX: 320-235-1816
1-800-992-8853 1-800-328-8994

Low Carbon HOT ROLLED FLATS

A-36

Size In Inches		Weight Per Ft. In Lbs.	Size In Inches	Weight Per Ft. In Lbs.	
1/4	X	1/2		2.92	
		5/8		3.45	
		3/4		3.72	
		7/8		4.25	
		1		4.78	
		1 1/8		5.31	
		1 1/4		5.84	
		1 3/8		6.38	
		1 1/2		7.44	
		1 5/8		8.50	
		1 3/4		10.63	
		2		12.76	
			1.70	3/8 X	3/4
		2 1/4	1.91		7/8
		2 1/2	2.13		1
		2 3/4	2.34		1 1/8
		3	2.55		1 1/4
		3 1/4	2.76		1 3/8
		3 1/2	2.98		1 1/2
		3 3/4	3.19		1 5/8
		4	3.40		1 3/4
		4 1/4	3.61		2
		4 1/2	3.83		2 1/4
		5	4.25		2 1/2
5 1/2	4.68		2 3/4		
6	5.10		3		
7	5.95		3 1/4		
8	6.80		3 1/2		
9	7.65		4		
10	8.50		4 1/2		
11	9.35		5		
12	10.20		5 1/2		
5/16	X	3/4		7.65	
		7/8		8.93	
		1		9.56	
		1 1/8		10.20	
		1 1/4		11.48	
		1 3/8		12.75	
		1 1/2		14.03	
		1 3/4		15.30	
		2		17.85	
		2 1/4			
		2 1/2			
		2 3/4			

West Central Steel, Inc.

PHONE: 320-235-4070 DIRECT SALES FAX: 320-235-1816
1-800-992-8853 1-800-328-8994

Low Carbon HOT ROLLED FLATS

A-36

Size In Inches		Weight Per Ft. In Lbs.		Size In Inches		Weight Per Ft. In Lbs.	
1/2	X	3/4	1.28	5/8	X	4 1/2	9.56
		1	1.70			5	10.63
		1 1/8	1.91			5 1/2	11.69
		1 1/4	2.13			6	12.75
		1 3/8	2.34			7	14.88
		1 1/2	2.55			8	17.00
		1 5/8	2.76			9	19.13
		1 3/4	2.98			10	21.25
		2	3.40			12	25.50
		2 1/4	3.83			14	29.75
		2 1/2	4.25	3/4	X	1	2.55
		2 3/4	4.68			1 1/8	2.87
		3	5.10			1 1/4	3.19
		3 1/4	5.53			1 1/2	3.83
		3 1/2	5.95			1 5/8	4.14
		3 3/4	6.38			1 3/4	4.46
		4	6.80			1 7/8	4.78
		4 1/2	7.65			2	5.10
		5	8.50			2 1/4	5.74
		5 1/2	9.35			2 1/2	6.38
		6	10.20			2 3/4	7.01
		6 1/2	11.05			3	7.65
		7	11.90			3 1/4	8.29
		8	13.60			3 1/2	8.93
		9	15.30			4	10.20
		10	17.00			4 1/2	11.48
		12	20.40			5	12.75
		14	23.80			5 1/2	14.03
5/8	X	3/4	1.59			6	15.30
		1	2.13			7	17.85
		1 1/4	2.66			8	20.40
		1 3/8	2.92			9	22.95
		1 1/2	3.19			10	25.50
		1 3/4	3.72			12	30.60
		2	4.25			14	35.70
		2 1/4	4.78	7/8	X	1	2.98
		2 1/2	5.31			1 1/4	3.72
		2 3/4	5.84			1 1/2	4.46
		3	6.38			1 3/4	5.21
		3 1/4	6.91			2	5.95
		3 1/2	7.44			2 1/4	6.69
		4	8.50			2 1/2	7.44

West Central Steel, Inc.

PHONE: 320-235-4070 DIRECT SALES FAX: 320-235-1816
1-800-992-8853 1-800-328-8994

Low Carbon HOT ROLLED FLATS

A-36

Size In Inches		Weight Per Ft. In Lbs.		Size In Inches		Weight Per Ft. In Lbs.	
7/8	X	3	8.93	1 1/4	X	3	12.75
		3 1/2	10.41			3 1/4	13.81
		4	11.90			3 1/2	14.88
		4 1/2	13.39			4	17.00
		5	14.88			4 1/2	19.13
		5 1/2	16.36			5	21.25
		6	17.85			5 1/2	23.38
		7	20.83			6	25.50
		8	23.80			7	29.75
1	X	1 1/4	4.25			8	34.00
		1 1/2	5.10	1 1/2	X	1 3/4	8.93
		1 3/4	5.95			2	10.20
		2	6.80			2 1/4	11.48
		2 1/4	7.65			2 1/2	12.75
		2 1/2	8.50			2 3/4	14.03
		2 3/4	9.35			3	15.30
		3	10.20			3 1/2	17.85
		3 1/4	11.05			4	20.40
		3 1/2	11.90			4 1/2	22.95
		4	13.60			5	25.50
		4 1/2	15.30			5 1/2	28.05
		5	17.00			6	30.60
		5 1/2	18.70			7	35.70
		6	20.40			8	40.80
		7	23.80	1 3/4	X	2	11.90
		8	27.20			2 1/2	14.88
		9	30.60			3	17.85
		10	34.00			3 1/2	20.83
		12	40.80			4	23.80
		14	47.60			4 1/2	26.78
1 1/8	X	2	7.65			5	29.75
		2 3/4	10.52			6	35.70
		3	11.48	2	X	2 1/2	17.00
		4	15.30			3	20.40
		5	19.13			3 1/2	23.80
		6	22.95			4	27.29
1 1/4	X	1 1/2	6.38			4 1/2	30.60
		1 3/4	7.44			5	34.00
		2	8.50			6	40.80
		2 1/4	9.56	2 1/4	X	3	22.95
		2 1/2	10.63			4	30.60
		2 3/4	11.69				

West Central Steel, Inc.

PHONE: 320-235-4070 DIRECT SALES FAX: 320-235-1816
1-800-992-8853 1-800-328-8994

Low Carbon HOT ROLLED ROUNDS A-36

Size In Inches	Weight Per Ft. In Lbs.
1/4	.167
5/16	.216
3/8	.376
7/16	.511
1/2	.668
9/16	.845
5/8	1.04
3/4	1.50
7/8	2.05
15/16	2.35
1	2.67
1 1/8	3.38
1 3/16	3.77
1 1/4	4.17
1 3/8	5.05
1 1/2	6.01
1 5/8	7.05
1 3/4	8.18
1 7/8	9.39
2	10.68
2 1/4	13.52
2 3/8	15.06
2 1/2	16.69
2 5/8	18.40
2 3/4	20.19
3	24.03

West Central Steel, Inc.

PHONE: 320-235-4070 DIRECT SALES FAX: 320-235-1816
1-800-992-8853 1-800-328-8994

Low Carbon / Medium Carbon HOT ROLLED SQUARES A-36

Size In Inches	Weight Per Ft. In Lbs.
3/8	.478
7/16	.650
1/2	.850
5/8	1.33
3/4	1.91
7/8	2.60
1	3.40
1 1/8	4.30
1 1/4	5.31
1 3/8	6.43
1 1/2	7.65
1 5/8	8.98
1 3/4	10.41
2	13.60
2 1/4	17.21
2 1/2	21.25
2 3/4	25.71
3	30.60
3 1/4	35.91
3 1/2	41.65
3 3/4	47.81
4	54.40
4 1/2	68.85
5	85.00
6	122.40

West Central Steel, Inc.

PHONE: 320-235-4070 DIRECT SALES FAX: 320-235-1816
1-800-992-8853 1-800-328-8994

T TEES - Bar Size

Conforms to ASTM A36

Stock Lengths: 20 ft.

Flange In Inches	Stem In Inches	Stem Thickness In Inches	Weight per ft. In Lbs.
1 1/2	1 1/2	3/16	1.90
1 1/2	1 1/2	1/4	2.43
1 3/4	1 3/4	3/16	2.16
2	2	1/4	3.62
2 1/2	2 1/2	1/4	4.60

In addition to the bar size section available from stock above, any size beam can be split to make two tees.

M BEAMS - Jr., H, or Light Beams

Conforms to ASTM A36

Stock Lengths: 20, 40 and 60 ft.

Nom. In Inches	Formerly Called	Thickness In Inches	Flange Width	WEB Flange Thickness	Area
M3 X 2.9	Jr. Beam	.130	2.250	.090	.853
M4 X 3.25	Jr. Beam	.130	2.250	.092	.940
X 18.9	H Beam	.316	5.003	.416	5.55
M6 X 4.4	Jr. Beam	.114	1.844	.171	1.29
M8 X 6.5	Jr. Beam	.135	2.281	.189	1.92
M10 X 9.0	Jr. Beam	.157	2.690	.206	.265

West Central Steel, Inc.

PHONE: 320-235-4070 DIRECT SALES FAX: 320-235-1816
1-800-992-8853 1-800-328-8994

S BEAMS - Standard

Conforms to ASTM A36

Nom. In Inches		Web		Flange Width	Flange Thickness	Area Sq Inch
		Wt/Ft/ Lbs	Thickness In Inches			
S3	X	5.7	.170	2.330	.260	1.67
	X	7.5	.349	2.509	.260	2.21
S4	X	7.7	.193	2.663	.293	2.26
	X	9.5	.326	2.796	.293	2.79
S5	X	10.0	.214	3.004	.326	2.94
S6	X	12.5	.232	3.332	.359	3.67
	X	17.25	.465	3.565	.359	5.07
S8	X	18.4	.271	4.001	.425	5.41
	X	23.0	.441	4.171	.425	6.77
S10	X	25.4	.311	4.661	.491	7.46
	X	35.0	.594	4.944	.491	10.30
S12	X	31.8	.350	5.000	.544	9.35
	X	35.0	.428	5.078	.544	10.30
	X	40.8	.472	5.252	.659	12.00
	X	50.0	.687	5.477	.659	14.70
S15	X	42.9	.411	5.501	.622	12.60
	X	50.0	.550	5.640	.622	14.70
S18	X	54.7	.461	6.001	.691	16.10
	X	70.0	.711	6.251	.691	20.60
S20	X	66.0	.505	6.255	.795	19.40
S24	X	80.0	.500	7.00	.870	23.50
	X	100.0	.745	7.245	.870	29.30
	X	106.0	.620	7.870	1.090	31.20

West Central Steel, Inc.

PHONE: 320-235-4070 DIRECT SALES FAX: 320-235-1816
1-800-992-8853 1-800-328-8994

W BEAMS - Wide Flange

Conforms to ASTM A36 or A992

Nom. Depth		Web					
In Inches		Depth	Thickness	Flange	Flange	Area	
Wt/Ft/Lbs		In Inches	In Inches	Width	Thickness	Sq Inch	
W4	X	13.0	4.16	.280	4.060	.345	.383
W5	X	16.0	5.01	.240	5.000	.360	4.71
		19.0	5.15	.270	5.030	.430	5.56
W6	X	9.0	5.90	.170	3.940	.215	2.68
		12.0	6.03	.230	4.000	.280	3.55
		15.0	5.99	.230	5.990	.260	4.43
		16.0	6.28	.260	4.030	.405	4.74
		20.0	6.20	.260	6.020	.365	5.87
		25.0	6.38	.320	6.080	.455	7.34
W8	X	10.0	7.89	.170	3.940	.205	2.96
		13.0	7.99	.230	4.000	.255	3.84
		15.0	8.11	.245	4.015	.315	4.44
		18.0	8.14	.230	5.250	.330	5.26
		21.0	8.28	.250	5.270	.400	6.16
		24.0	7.93	.245	6.495	.400	7.08
		28.0	8.06	.285	6.535	.465	8.25
		31.0	8.00	.285	7.995	.435	9.13
		35.0	8.12	.310	8.020	.495	10.30
		40.0	8.25	.360	8.070	.560	11.70
		48.0	8.50	.400	8.110	.685	14.10
		58.0	8.75	.510	8.220	.810	17.10
		67.0	9.00	.570	8.280	.935	19.70
W10	X	12.0	9.87	.190	3.960	.210	3.54
		15.0	9.99	.230	4.000	.270	4.41
		17.0	10.11	.240	4.010	.330	4.99
		19.0	10.24	.250	4.020	.395	5.62
		22.0	10.17	.240	5.750	.360	6.49
		26.0	10.33	.260	5.770	.440	7.61
		30.0	10.47	.300	5.810	.510	8.84
		33.0	9.73	.290	7.960	.435	9.71
		39.0	9.92	.315	7.985	.530	11.50

Inquire on beams heavier than those listed.

West Central Steel, Inc.

PHONE: 320-235-4070 DIRECT SALES FAX: 320-235-1816
1-800-992-8853 1-800-328-8994

W BEAMS - Wide Flange

Conforms to ASTM A36 or A992

Nom. Depth In Inches Wt/Ft/Lbs	Web					
	Depth In Inches	Thickness In Inches	Flange Width	Flange Thickness	Area Sq Inch	
W10 X	45.0	10.10	.350	8.020	.620	13.30
	49.0	9.98	.340	10.000	.560	14.40
	54.0	10.09	.370	10.03	.615	15.80
	60.0	10.22	.420	10.080	.680	17.60
	68.0	10.40	.470	10.130	.770	20.00
	77.0	10.60	.530	10.190	.870	22.60
	88.0	10.84	.605	10.265	.990	25.90
	100.0	11.10	.680	10.340	1.120	29.40
W12 X	14.0	11.91	.200	3.970	.225	4.16
	16.0	11.99	.220	3.990	.265	4.71
	19.0	12.16	.235	4.005	.350	5.57
	22.0	12.31	.260	4.030	.425	6.48
	26.0	12.22	.230	6.490	.380	7.65
	30.0	12.34	.260	6.520	.440	8.79
	35.0	12.50	.300	6.560	.520	10.30
	40.0	11.94	.295	8.005	.515	11.80
	45.0	12.06	.335	8.045	.575	13.20
	50.0	12.19	.370	8.080	.640	14.70
	53.0	12.06	.345	9.995	.575	15.60
	58.0	12.19	.360	10.010	.640	17.00
	65.0	12.12	.390	12.000	.605	19.10
	72.0	12.25	.430	12.040	.670	21.10
	79.0	12.38	.470	12.080	.735	23.20
87.0	12.53	.515	12.125	.810	25.60	
96.0	12.71	.550	12.160	.900	28.20	
106.0	12.89	.610	12.400	.990	31.20	
W14 X	22.0	13.74	.230	5.000	.335	6.49
	26.0	13.91	.255	5.025	.420	7.69
	30.0	13.84	.270	6.730	.385	8.85
	34.0	13.98	.285	6.745	.455	10.00
	38.0	14.10	.310	6.770	.515	11.20
	43.0	13.66	.305	7.995	.530	12.60
	48.0	13.79	.340	8.030	.595	14.10
	53.0	13.92	.370	8.060	.660	15.60
	61.0	13.89	.375	9.995	.645	17.90
	74.0	14.17	.450	10.070	.785	21.80

Inquire on beams heavier than those listed.

West Central Steel, Inc.

PHONE: 320-235-4070 DIRECT SALES FAX: 320-235-1816
1-800-992-8853 1-800-328-8994

W BEAMS - Wide Flange

Conforms to ASTM A36 or A992

Nom. Depth In Inches Wt/Ft/Lbs	Web					
	Depth In Inches	Thickness In Inches	Flange Width	Flange Thickness	Area Sq Inch	
W14 X	90.0	14.02	.440	14.520	.710	26.50
	99.0	14.16	.485	14.565	.780	29.10
	109.0	14.32	.525	14.605	.860	32.00
	120.0	14.48	.590	14.670	.940	35.30
W16 X	26.0	15.69	.250	5.500	.345	7.68
	31.0	15.88	.275	5.525	.440	9.12
	36.0	15.86	.295	6.985	.430	10.60
	40.0	16.01	.305	6.995	.505	11.80
	45.0	16.13	.365	7.035	.565	13.30
	50.0	16.26	.380	7.070	.630	14.70
	57.0	16.43	.430	7.120	.715	16.80
	67.0	16.33	.395	10.235	.665	19.70
	77.0	16.52	.455	10.295	.760	22.60
	89.0	16.75	.525	10.365	.875	26.20
	100.0	16.97	.585	10.425	.985	29.40
W18 X	35.0	17.70	.300	6.000	.425	10.30
	40.0	17.90	.315	6.015	.525	11.80
	46.0	18.06	.360	6.060	.605	13.50
	50.0	17.99	.355	7.495	.570	14.70
	55.0	18.11	.390	7.530	.630	16.20
	60.0	18.24	.415	7.555	.695	17.60
	65.0	18.35	.450	7.590	.750	19.10
	71.0	18.47	.495	7.635	.810	20.80
	76.0	18.21	.425	11.035	.680	22.30
	86.0	18.39	.480	11.090	.770	25.30
	97.0	18.59	.535	11.145	.870	28.50
W21 X	44.0	20.66	.350	6.500	.450	13.00
	50.0	20.83	.380	6.530	.535	14.70
	57.0	21.06	.405	6.555	.650	16.70
	62.0	20.99	.400	8.240	.615	18.30
	68.0	21.13	.430	8.270	.685	20.00
	73.0	21.24	.455	8.295	.740	21.50
	83.0	21.43	.515	8.355	.835	24.30
	93.0	21.62	.580	8.420	.930	27.30
	101.0	21.36	.500	12.290	.800	29.80
	111.0	21.51	.550	12.340	.875	32.70

Inquire on beams heavier than those listed.

West Central Steel, Inc.

PHONE: 320-235-4070 DIRECT SALES FAX: 320-235-1816
1-800-992-8853 1-800-328-8994

W BEAMS - Wide Flange

Conforms to ASTM A36 or A992

Nom. Depth In Inches Wt/Ft/Lbs	Web					
	Depth In Inches	Thickness In Inches	Flange Width	Flange Thickness	Area Sq Inch	
W24 X	55.0	23.57	.395	7.005	.505	16.20
	62.0	23.74	.430	7.040	.590	18.20
	68.0	23.73	.415	8.965	.585	20.10
	76.0	23.92	.440	8.990	.690	22.40
	84.0	24.10	.470	9.020	.770	24.70
	94.0	24.31	.515	9.065	.875	27.70
	104.0	24.06	.500	12.750	.750	30.60
	117.0	24.26	.550	12.800	.850	34.40
	131.0	24.48	.605	12.885	.960	38.50
	146.0	24.74	.650	12.900	1.090	43.00
162.0	25.00	.705	12.955	1.220	47.70	
W27 X	84.0	26.71	.460	9.960	.640	24.80
	94.0	26.92	.490	9.990	.745	27.70
	102.0	27.09	.515	10.015	.830	30.00
	114.0	27.29	.570	10.070	.930	33.50
	146.0	27.38	.605	13.965	.975	42.90
W30 X	99.0	29.65	.520	10.450	.670	29.10
	108.0	29.83	.545	10.475	.760	31.70
	116.0	30.01	.565	10.495	.850	34.20
	124.0	30.17	.585	10.515	.980	36.50
	132.0	30.31	.615	10.545	1.000	38.90
W33 X	118.0	32.86	.550	11.480	.740	34.70
	130.0	33.09	.580	11.510	.855	38.30
W36 X	135.0	35.55	.600	11.950	.790	39.70
	150.0	35.85	.625	11.975	.940	44.20
	160.0	36.01	.650	12.000	1.020	47.00

Inquire on beams heavier than those listed.

West Central Steel, Inc.

PHONE: 320-235-4070 DIRECT SALES FAX: 320-235-1816
1-800-992-8853 1-800-328-8994

COLD FINISHED ROUNDS

1018

Color Code: Green

A versatile low-carbon steel with good hardening capabilities, fair machinability, and good weldability.

Suitable for some shafting requirements

Size In Inches	Weight Per Ft. in Lbs.	Size In Inches	Weight Per Ft. in Lbs.
1/8	.042	1 11/16	7.60
3/16	.094	1 3/4	8.18
1/4	.167	1 13/16	8.77
5/16	.261	1 7/8	9.39
3/8	.380	1 15/16	10.02
7/16	.511	2	10.68
1/2	.668	2 1/16	11.36
9/16	.845	2 1/8	12.06
5/8	1.04	2 3/16	12.78
11/16	1.26	2 1/4	13.52
3/4	1.50	2 5/16	14.28
13/16	1.76	2 3/8	15.06
7/8	2.05	2 7/16	15.87
15/16	2.35	2 1/2	16.69
1	2.67	2 9/16	17.53
1 1/16	3.02	2 5/8	18.40
1 1/8	3.38	2 11/16	19.29
1 3/16	3.77	2 3/4	20.19
1 1/4	4.17	2 7/8	22.07
1 5/16	4.60	2 15/16	23.04
1 3/8	5.05	3	24.03
1 7/16	5.52	3 7/16	31.55
1 1/2	6.01	3 15/16	41.40
1 9/16	6.52	4	42.73
1 5/8	7.05	4 7/16	52.58

West Central Steel, Inc.

PHONE: 320-235-4070 DIRECT SALES FAX: 320-235-1816
1-800-992-8853 1-800-328-8994

COLD FINISHED ROUNDS 1045

Color Code: Blue

A medium carbon steel that is higher strength.
Good hardening capabilities.

Size In Inches	Weight Per Ft. in Lbs.	Size In Inches	Weight Per Ft. in Lbs.
1/4	.167	1 1/2	6.01
5/16	.261	1 9/16	6.52
3/8	.376	1 5/8	7.05
7/16	.511	1 11/16	7.60
1/2	.668	1 3/4	8.18
9/16	.845	1 13/16	8.77
5/8	1.04	1 7/8	9.39
11/16	1.26	1 15/16	10.02
3/4	1.50	2	10.68
13/16	1.76	2 1/8	12.06
7/8	2.05	2 3/16	12.78
15/16	2.35	2 1/4	13.52
1	2.67	2 3/8	15.06
1/16	3.02	2 7/16	15.87
1 1/8	3.38	2 1/2	16.69
1 3/16	3.77	2 15/16	23.04
1 1/4	4.17	3 7/16	31.55
1 5/16	4.60	3 3/4	37.55
1 3/8	5.05	3 15/16	41.40
1 7/16	5.52		

West Central Steel, Inc.

PHONE: 320-235-4070 DIRECT SALES FAX: 320-235-1816
1-800-992-8853 1-800-328-8994

STRESS 1144 ROUNDS

Color Code: Yellow

A high strength steel that has been cold-worked to achieve high mechanical properties. The material is then treated to relieve the stresses caused by cold-working.

Tensile Strength 100,000 psi

Yield Strength 90,000 psi

Size In Inches	Weight Per Ft. in Lbs.	Size In Inches	Weight Per Ft. in Lbs.
1/2	.668	1 9/16	6.52
9/16	.845	1 5/8	7.05
5/8	1.04	1 11/16	7.60
11/16	1.26	1 3/4	8.18
3/4	1.50	1 13/16	8.77
13/16	1.76	1 7/8	9.39
7/8	2.05	1 15/16	10.02
15/16	2.35	2	10.68
1	2.67	2 1/16	11.36
1 1/16	3.02	2 1/8	12.06
1 1/8	3.38	2 3/16	12.78
1 3/16	3.77	2 1/4	13.52
1 1/4	4.17	2 5/16	14.28
1 5/16	4.60	2 3/8	15.06
1 3/8	5.05	2 7/16	15.87
1 7/16	5.52	2 1/2	16.69
1 1/2	6.01		

West Central Steel, Inc.

PHONE: 320-235-4070 DIRECT SALES FAX: 320-235-1816
1-800-992-8853 1-800-328-8994

COLD FINISHED SQUARES

1018

Color Code: Green

A versatile low-carbon steel with good hardening capabilities, fair machinability, and good weldability.

Suitable for some shafting requirements

Size In Inches	Weight Per Ft. in Lbs.	Size In Inches	Weight Per Ft. in Lbs.
3/16	.12	5/8	1.33
1/4	.21	3/4	1.91
3/8	.48	7/8	2.60
1/2	.85		

COLD FINISHED SQUARES

1215

Color Code: Orange

Excellent cutting and machining characteristics.

It has a smooth bright, machined finish.

Size In Inches	Weight Per Ft. in Lbs.
1 1/8	4.31
1 1/4	5.32
1 1/2	7.65

West Central Steel, Inc.

PHONE: 320-235-4070 DIRECT SALES FAX: 320-235-1816
1-800-992-8853 1-800-328-8994

SHEET HOT ROLLED ASTM A569

This specification covers hot-rolled commercial quality sheets where not mechanical specifications are required.

Tensil Strength 53,000 psi

Yield Strength 30,000 psi

ASTM A607 Grade 50

This specification covers high strength, low alloy sheets.

Tensil Strength 65,000 psi

Yield Strength 50,000 psi

GA or Decimal	Size In Inches	Decimal In Inches	Est. Wt. per sq.ft. in Lbs.	Est. Wt. per sheet in Lbs.	
7	48 x 96	.1793	7.50	240.0	
	48 x 120	.1793	7.50	300.0	
	48 x 144	.1793	7.50	360.0	
	48 x 240	.1793	7.50	600.0	
	60 x 96	.1793	7.50	300.0	
	60 x 120	.1793	7.50	375.0	
	60 x 144	.1793	7.50	450.0	
	72 x 120	.1793	7.50	450.0	
	72 x 144	.1793	7.50	540.0	
	10	48 x 96	.1345	5.63	180.0
		48 x 120	.1345	5.63	225.0
		48 x 144	.1345	5.63	270.0
		48 x 240	.1345	5.63	450.0
		60 x 96	.1345	5.63	225.0
60 x 120		.1345	5.63	281.3	
60 x 144		.1345	5.63	337.5	
60 x 240		.1345	5.63	562.5	
72 x 96		.1345	5.63	270.0	
72 x 120		.1345	5.63	337.5	
72 x 144		.1345	5.63	405.0	
72 x 240		.1345	5.63	675.0	
11		48 x 96	.1196	5.00	160.0
		48 x 120	.1196	5.00	200.0
	48 x 144	.1196	5.00	240.0	
	48 x 240	.1196	5.00	400.0	
	60 x 96	.1196	5.00	200.0	
	60 x 120	.1196	5.00	250.0	

West Central Steel, Inc.

PHONE: 320-235-4070 DIRECT SALES FAX: 320-235-1816
1-800-992-8853 1-800-328-8994

SHEET HOT ROLLED

GA or Decimal	Size In Inches	Decimal In Inches	Est. Wt. per sq.ft. in Lbs.	Est. Wt. per sheet in Lbs.
(continued)				
11	60 x 144	.1196	5.00	300.0
	60 x 240	.1196	5.00	500.0
	72 x 96	.1196	5.00	240.0
	72 x 120	.1196	5.00	300.0
	72 x 144	.1196	5.00	360.0
12	48 x 96	.1046	4.38	140.0
	48 x 120	.1046	4.38	175.0
	48 x 144	.1046	4.38	210.0
	48 x 240	.1046	4.38	350.0
	54 x 120	.1046	4.38	196.9
	60 x 96	.1046	4.38	175.0
	60 x 120	.1046	4.38	218.8
	60 x 144	.1046	4.38	262.5
	60 x 240	.1046	4.38	437.5
	72 x 96	.1046	4.38	210.0
	72 x 120	.1046	4.38	262.5
	72 x 144	.1046	4.38	315.0
14	48 x 96	.0747	3.13	100.0
	48 x 120	.0747	3.13	125.0
	48 x 144	.0747	3.13	150.0
	60 x 96	.0747	3.13	125.0
	60 x 120	.0747	3.13	156.3
14	60 x 144	.0747	3.13	187.5
	72 x 96	.0747	3.13	150.0
	72 x 120	.0747	3.13	187.5
	72 x 144	.0747	3.13	225.4
16	48 x 96	.0598	2.50	80.0
	48 x 120	.0598	2.50	100.0
	48 x 144	.0598	2.50	120.0
	60 x 96	.0598	2.50	100.0
	60 x 120	.0598	2.50	125.0
	60 x 144	.0598	2.50	150.0

West Central Steel, Inc.

PHONE: 320-235-4070 DIRECT SALES FAX: 320-235-1816
1-800-992-8853 1-800-328-8994

PLATE - Hot Rolled - Structural Quality ASTM A-36

This specification covers carbon plate for general structural applications. Good weldability, formable with good strength levels.

Tensile Strength 58,000 psi

Yield Strength 36,000 psi

ASTM A-572 Grade 50

This specification is for high strength, low alloy plates. Less formable than A-36.

Tensile Strength 65,000 psi

Yield Strength 50,000 psi

Size In Inches	Weight per sq. ft. in Lbs.	Size In Inches	Weight per sq. ft. in Lbs.
1/4 x 48	10.21	1/2 x 84	20.42
60	10.21	96	20.42
72	10.21	5/8 x 9	25.53
84	10.21	10	25.53
96	10.21	12	25.53
5/16 x 10	12.76	14	25.53
48	12.76	48	25.53
60	12.76	60	25.53
72	12.76	72	25.53
84	12.76	84	25.53
96	12.76	96	25.53
3/8 x 9	15.32	3/4 x 9	30.63
10	15.32	10	30.63
14	15.32	12	30.63
48	15.32	14	30.63
60	15.62	48	30.63
72	15.32	60	30.63
84	15.32	72	30.63
96	15.32	3/4 x 84	30.63
1/2 x 9	20.42	96	30.63
10	20.42	1 x 9	40.84
12	20.42	10	40.84
14	20.42	12	40.84
48	20.42	14	40.84
60	20.42	48	40.84
72	20.42	60	40.84

West Central Steel, Inc.

PHONE: 320-235-4070 DIRECT SALES FAX: 320-235-1816
1-800-992-8853 1-800-328-8994

PLATE - Hot Rolled

Size In Inches	Weight per sq. ft. in Lbs.	Size In Inches	Weight per sq. ft. in Lbs.
(continued)			
1 x 72	40.84	1 3/4 x 72	71.47
84	40.84	84	71.47
96	40.84	96	71.47
1 1/4 x 48	51.05	2 x 48	81.68
60	51.05	60	81.68
72	51.05	72	81.68
84	51.05	84	81.68
90	51.05	96	81.68
96	51.05	2 1/4 x 60	91.89
1 3/8 x 96	56.16	72	91.89
1 1/2 x 48	61.26	84	91.89
60	61.26	96	91.89
72	61.26	2 1/2 x 48	102.1
84	61.26	60	102.1
96	61.26	72	102.1
1 3/4 x 48	71.47	84	102.1
60	71.47	96	102.1

West Central Steel, Inc.

PHONE: 320-235-4070 DIRECT SALES FAX: 320-235-1816
1-800-992-8853 1-800-328-8994

PLATE - Abrasion Resisting Hot Rolled AR 235/250

Abrasion resistant wear plate made from carbon and alloy steels that provide excellent resistance. toughness is achieved through use of alloying elements.

Size In Inches	Weight per ft. in Lbs.	AR Medium Hard
10 GA x 48	5.625	X
60	5.625	X
3/16 x 48	5.625	X
60	7.660	X
72	7.660	X
1/4 x 48	10.21	X
60	10.21	X
5/16 x 48	12.76	X
60	12.76	X
3/8 x 48	15.32	X
60	15.32	X
72	15.32	X
1/2 x 48	20.42	X
60	20.42	X
72	20.42	X

INQUIRE ON HARDOX 400

West Central Steel, Inc.

PHONE: 320-235-4070 DIRECT SALES FAX: 320-235-1816
1-800-992-8853 1-800-328-8994

SAFETY FLOOR PLATES Medium Pattern

This tough, rolled steel floor plate with raised lug pattern provides plenty of traction for feet and wheels.

Nom. Gauge or Size in Inches	Weight per sq. ft. in Lbs.	Nom. Gauge or Size in Inches	Weight per sq. ft. in Lbs.
14GA X 48	3.75	1/4 X 60	11.26
60	3.75	72	11.26
12GA X 48	5.25	5/16 X 48	13.81
60	5.25	60	13.81
1/8 X 48	6.16	72	13.81
60	6.16	3/8 X 48	16.37
72	6.16	60	16.37
3/16 X 48	8.71	72	16.37
60	8.71	1/2 X 48	21.47
72	8.71	60	21.47
1/4 X 42	11.26	72	21.47
48	11.26		

West Central Steel, Inc.

PHONE: 320-235-4070 DIRECT SALES FAX: 320-235-1816
1-800-992-8853 1-800-328-8994

PIPE Carbon Steel ASTM A53

This produce may be used for mechanical or pressure applications. It is pressure tested for use with air, water, or gas lines. Many sizes are available in a preprimed produce called Kleenkote. Some sizes available in bare wall. Inquire on your specific needs.

Tensile Strength 48,000 psi
Yield Strength 30,000 psi

Nominal Size In Inch	Weight Per Ft. In Lbs.	O.D. In Inches	Wall Thickness Inches
----------------------------	------------------------------	----------------------	-----------------------------

SCHEDULE 10

1	1.404	1.315	.109
1 1/4	1.806	1.660	.109
1 1/2	2.085	1.900	.109
2	2.638	2.375	.109

SCHEDULE 40 - Standard

1/8	.240	.405	.068
1/4	.420	.540	.088
3/8	.570	.675	.091
1/2	.850	.840	.109
3/4	1.130	1.050	.113
1	1.680	1.315	.133
1 1/4	2.270	1.660	.140
1 1/2	2.720	1.900	.145
2	3.650	2.375	.154
2 1/2	5.790	2.875	.203
3	7.580	3.500	.216
3 1/2	9.110	4.000	.226
4	10.79	4.500	.237
5	14.62	5.563	.258
6	18.97	6.625	.280
8	28.55	8.625	.322
10	40.48	10.750	.365
12	49.56	12.750	.375
14	54.57	14.000	.375
16	62.58	16.000	.375

West Central Steel, Inc.

PHONE: 320-235-4070 DIRECT SALES FAX: 320-235-1816
1-800-992-8853 1-800-328-8994

PIPE Carbon Steel

Nominal Size In Inch	weight Per Ft. In Lbs.	O.D. In Inches	Wall Thickness Inches
Schedule 80 - Extra Heavy			
1/4	.5400	.540	.119
3/8	.7388	.675	.126
1/2	1.090	.840	.147
3/4	1.470	1.050	.154
1	2.170	1.315	.179
1 1/4	3.000	1.660	.191
1 1/2	3.630	1.900	.200
2	5.020	2.375	.218
2 1/2	7.660	2.875	.276
3	10.25	3.500	.300
3 1/2	12.51	4.000	.318
4	14.98	4.500	.337
5	20.78	5.563	.375
6	28.57	6.625	.432
8	43.39	8.625	.500
10	54.74	10.750	.500
12	65.42	12.750	.500
14	72.09	14.000	.500
16	82.77	16.000	.500

Structural Pipe

This product is a tube that is sized the same as pipe but does not have the pressure testing. It is intended for structural use only.

It has a clean finish and is stronger than pipe, conforms to
ASTM A513 and ASTM A500 Grade B.

Tensile Strength 58,000 psi – Yield Strength 42,000 psi

1/2	.851	.840	.109
3/4	1.192	1.05	.120
1	1.532	1.315	.120
1 1/4	2.184	1.66	.134
1 1/2	2.527	1.90	.134
2	3.52	2.375	.148
2 1/2	5.79	2.875	.203
3	7.15	3.5	.203
3 1/2	9.12	4.0	.226
4	10.79	4.5	.237
5	14.62	5.563	.258
6	18.97	6.625	.280

West Central Steel, Inc.

PHONE: 320-235-4070 DIRECT SALES FAX: 320-235-1816
1-800-992-8853 1-800-328-8994

SQUARE TUBING **Mechanical and Structural** **Carbon Steel** **ASTM A513**

A mechanical tubing (wall thickness in the gauge sizes) made from low carbon steel and electric resistance welded. Has good surface finish and forming qualities.

ASTM A500 Grade B and Grade C

A higher strength structural tubing (wall thickness in the fraction sizes) with good qualities for welding, forming, punching and drilling. A lot of sizes are dual grade certified. Inquire with your salesperson.

	Grade B	Grade C
Tensile Strength	58,000 psi	62,000 psi
Yield Strength	46,000 psi	50,000 psi

Kleenkote

A tube product that has been cleaned and primed. This light primer coating reduces cleaning and preparation, prolongs storage life, and makes it easier for handling, marking, and layout. Available in most tube sizes.

Stock Lengths: Mechanical - 20 and 24 ft. A513
Structural - 20,24 and 40 ft. A500 Gr. B

Wall Gauge	Wall Decimal	Weight per ft. in Lbs.
1/2" x 1/2"		
16	.065	.38
5/8" x 5/8"		
16	.065	.4950
3/4" x 3/4"		
16	.065	.6055
14	.083	.7529
11	.120	.95
1" x 1"		
16	.065	.8265
14	.083	1.034

West Central Steel, Inc.

PHONE: 320-235-4070 DIRECT SALES FAX: 320-235-1816
1-800-992-8853 1-800-328-8994

SQUARE TUBING

Mechanical and Structural

Carbon Steel

Stock Lengths: Mechanical - 20 and 24 ft. A513
Structural - 20,24 and 40 ft. A500 Gr. B

Wall Gauge	Wall Decimal	Weight per ft. in Lbs.
(continued)		
1" x 1"		
12	.109	1.321
11	.120	1.436
1 1/4" x 1 1/4"		
16	.065	1.048
14	.083	1.317
12	.109	1.692
11	.120	1.844
3/16	.188	2.40
1 1/2" x 1 1/2"		
16	.065	1.269
14	.083	1.600
12	.109	2.062
11	.120	2.252
3/16	.188	3.040
1/4	.250	3.700
1 3/4" x 1 3/4"		
16	.065	1.490
14	.083	1.882
11	.120	2.660
2" x 2"		
16	.065	1.711
14	.083	2.164
12	.109	2.803
11	.120	3.05
1/8	.125	3.068
3/16	.188	4.320
1/4	.250	5.410
2 1/2" x 2 1/2"		
14	.083	2.728
11	.120	3.884
1/8	.125	3.900
3/16	.188	5.590
1/4	.250	7.110
5/16	.313	8.430

West Central Steel, Inc.

PHONE: 320-235-4070 DIRECT SALES FAX: 320-235-1816
1-800-992-8853 1-800-328-8994

SQUARE TUBING

Mechanical and Structural

Carbon Steel

Stock Lengths: Mechanical - 20 and 24 ft. A513
Structural - 20,24 and 40 ft. A500 Gr. B

Wall Gauge	Wall Decimal	Weight per ft. in Lbs.
(continued)		
3" x 3"		
14	.083	3.293
11	.120	4.700
1/8	.125	4.750
3/16	.188	6.870
1/4	.250	8.810
5/16	.313	10.58
3/8	.375	12.15
3 1/2" x 3 1/2"		
11	.120	5.610
3/16	.188	8.150
1/4	.250	10.51
5/16	.313	12.70
3/8	.375	14.71
4" x 4"		
11	.120	6.332
1/8	.125	6.460
3/16	.188	9.420
1/4	.250	12.21
5/16	.313	14.83
3/8	.375	17.27
1/2	.500	21.63
4 1/2" x 4 1/2"		
3/16	.188	10.70
1/4	.250	13.91
5" x 5"		
11	.120	8.160
3/16	.188	11.97
1/4	.250	15.62
5/16	.313	19.08
3/8	.375	22.37
1/2	.500	28.43

West Central Steel, Inc.

PHONE: 320-235-4070 DIRECT SALES FAX: 320-235-1816
1-800-992-8853 1-800-328-8994

SQUARE TUBING

Mechanical and Structural Carbon Steel

Stock Lengths: Mechanical - 20 and 24 ft. A513
Structural - 20, 24 and 40 ft. A500 Gr. B

Wall Gauge	Wall Decimal	Weight per ft. in Lbs.
(continued)		
6" x 6"		
3/16	.188	14.53
1/4	.250	19.02
5/16	.313	23.34
3/8	.375	27.48
1/2	.500	35.24
5/8	.625	42.26
7" x 7"		
3/16	.188	17.08
1/4	.250	22.42
5/16	.313	27.59
3/8	.375	32.58
1/2	.500	42.05
8" x 8"		
3/16	.188	19.63
1/4	.250	25.82
5/16	.313	31.84
3/8	.375	37.69
1/2	.500	48.85
5/8	.625	59.32
10" x 10"		
3/16	.180	24.73
1/4	.250	32.63
5/16	.313	40.35
3/8	.375	47.90
1/2	.500	62.46
5/8	.625	76.33
12" x 12"		
1/4	.250	39.43
3/8	.375	58.10
1/2	.500	76.07
14" x 14"		
1/2	.500	89.68
16" x 16"		
1/2	.500	103.3

West Central Steel, Inc.

PHONE: 320-235-4070 DIRECT SALES FAX: 320-235-1816
1-800-992-8853 1-800-328-8994

RECTANGULAR TUBING

Mechanical and Structural

Carbon Steel

Stock Lengths: Mechanical - 20 and 24 ft
Structural - 20,24 and 40 ft.

	Wall Gauge	Wall Decimal	Weight per ft. in Lbs.
1 1/2" x 3/4" x	14	.083	1.176
	11	.120	1.640
1 1/2" x 1" x	16	.065	1.048
	14	.083	1.317
	11	.120	1.844
2" x 1" x	16	.065	1.269
	14	.083	1.600
	11	.120	2.252
2" x 1 1/4"	14	.083	1.740
	11	.120	2.660
2 1/2" x 1 1/2" x	14	.083	2.164
	11	.120	3.068
	1/8	.125	3.050
	3/16	.188	4.320
	1/4	.250	5.410
	11	.120	3.068
3" x 1" x	14	.083	2.10
	11	.120	3.068
3" x 1 1/2" x	14	.083	2.446
	12	.109	3.174
	11	.120	3.476
	3/16	.188	4.960
3" x 2" x	14	.083	2.728
	11	.120	3.884
	1/8	.125	3.900
	3/16	.188	5.590
	1/4	.250	7.110
3 1/2" x 2 1/2" x	1/4	.250	8.810
4" x 2" x	14	.083	3.263
	11	.120	4.700
	1/8	.125	4.750
	3/16	.188	6.870

West Central Steel, Inc.

PHONE: 320-235-4070 DIRECT SALES FAX: 320-235-1816
1-800-992-8853 1-800-328-8994

RECTANGULAR TUBING

Mechanical and Structural

Carbon Steel

Stock Lengths: Mechanical - 20 and 24 ft

Structural - 20, 24 and 40 ft.

	Wall Gauge	Wall Decimal	Weight per ft. in Lbs.
(continued)			
4" x 2" x	1/4	.250	8.810
	5/16	.313	10.58
4" x 3" x	11	.125	5.610
	3/16	.188	8.150
	1/4	.250	10.51
5" x 2" x	5/16	.313	12.70
	3/8	.375	14.710
	11	.180	5.61
	3/16	.188	8.150
	1/4	.250	10.51
5" x 2 1/2" x	5/16	.3125	12.684
	3/16	.188	8.780
	11	.120	6.46
5" x 3" x	3/16	.188	9.420
	1/4	.250	12.21
	5/16	.313	14.83
	3/8	.375	17.27
	1/2	.500	21.63
5" x 4" x	1/4	.250	13.91
	3/8	.375	19.82
6" x 2" x	11	.120	6.46
	3/16	.188	9.420
	1/4	.250	12.21
	5/16	.3125	14.808
6" x 3" x	3/8	.375	17.27
	11	.120	7.31
	3/16	.188	10.70
	1/4	.250	13.91
	5/16	.313	16.96
6" x 4" x	3/8	.375	19.82
	1/2	.500	25.03
	3/16	.188	11.97
	1/4	.250	15.62

West Central Steel, Inc.

PHONE: 320-235-4070 DIRECT SALES FAX: 320-235-1816
1-800-992-8853 1-800-328-8994

RECTANGULAR TUBING

Mechanical and Structural

Carbon Steel

Stock Lengths: Mechanical - 20 and 24 ft

Structural - 20, 24 and 40 ft.

	Wall Gauge	Wall Decimal	Weight per ft. in Lbs.
(continued)			
6" x 4" x	5/16	.313	19.08
	3/8	.375	22.37
	1/2	.500	28.43
7" x 4" x	3/16	.188	13.25
	1/4	.250	17.32
	3/8	.375	24.93
7" x 5" x	3/16	.188	14.53
	1/4	.250	19.02
	5/16	.313	23.34
	3/8	.375	27.48
8" x 2" x	1/2	.500	35.24
	3/16	.188	11.97
	1/4	.250	15.62
	5/16	.3125	19.08
8" x 3" x	3/8	.375	22.37
	3/16	.188	13.25
	1/4	.250	17.32
8" x 4" x	3/8	.375	24.93
	3/16	.188	14.53
	1/4	.250	19.02
8" x 6" x	5/16	.313	23.34
	3/8	.375	27.48
	1/2	.500	35.24
	3/16	.188	17.08
	1/4	.250	22.42
10" x 2" x	5/16	.313	27.59
	3/8	.375	32.58
	1/2	.500	42.05
	3/16	.188	14.53
10" x 3" x	1/4	.250	19.02
	1/4	.250	20.72
10" x 4" x	3/16	.188	17.08
	1/4	.250	22.42

West Central Steel, Inc.

PHONE: 320-235-4070 DIRECT SALES FAX: 320-235-1816
1-800-992-8853 1-800-328-8994

RECTANGULAR TUBING

Mechanical and Structural

Carbon Steel

Stock Lengths: Mechanical - 20 and 24 ft.

Structural - 20, 24 and 40 ft.

	Wall Gauge	Wall Decimal	Weight per ft. in Lbs.
(continued)			
10" x 4" x	5/16	.313	27.59
	3/8	.375	32.58
	1/2	.500	42.05
10" x 6" x	1/4	.250	25.82
	5/16	.313	31.84
	3/8	.375	37.69
10" x 8" x	1/2	.500	48.84
	1/4	.250	29.23
	3/8	.375	42.79
12" x 2" x	1/2	.500	55.66
	3/16	.188	17.08
	1/4	.250	22.42
12" x 4" x	3/16	.188	19.65
	1/4	.250	25.82
	3/8	.375	37.69
12" x 6" x	1/2	.500	48.84
	1/4	.250	29.23
	3/8	.375	42.79
12" x 8" x	1/2	.500	55.66
	1/4	.250	32.63
	5/16	.313	40.35
	3/8	.375	47.90
	1/2	.500	62.46

West Central Steel, Inc.

PHONE: 320-235-4070 DIRECT SALES FAX: 320-235-1816
1-800-992-8853 1-800-328-8994

BLACK KLEENKOTE SQUARE TUBING

Mechanical and Structural

Carbon Steel

Stock Lengths: Mechanical - 20 and 24 ft.

Structural - 20, 24 and 40 ft.

Wall Gauge	Wall Decimal	Weight per ft. in Lbs.
1" x 1"		
16	.065	.8265
14	.083	1.034
11	.120	1.44
1 1/4" x 1 1/4"		
16	.065	1.048
14	.083	1.317
11	.120	1.844
1 1/2" x 1 1/2"		
16	.065	1.269
14	.083	1.600
11	.120	2.252

West Central Steel, Inc.

PHONE: 320-235-4070 DIRECT SALES FAX: 320-235-1816
1-800-992-8853 1-800-328-8994

BLACK KLEENKOTE & RED-KOTE SQUARE TUBING

Mechanical and Structural

Carbon Steel

Stock Lengths: Mechanical - 20 and 24 ft.

Structural - 20, 24 and 40 ft.

Wall Gauge	Wall Decimal	Weight per ft. in Lbs.
2" x 2"		
16	.065	1.711
14	.083	2.164
11	.120	3.05
3/16	.188	4.320
1/4	.250	5.410
2 1/2" x 2 1/2"		
3/16	.188	5.590
1/4	.250	7.110
3" x 3"		
11	.120	4.75
3/16	.188	6.870
1/4	.250	8.810
3 1/2" x 3 1/2"		
3/16	.188	8.150
1/4	.250	10.51
4" x 4"		
11	.120	6.332
3/16	.188	9.420
1/4	.250	12.21
3/8	.375	17.27

West Central Steel, Inc.

PHONE: 320-235-4070 DIRECT SALES FAX: 320-235-1816
1-800-992-8853 1-800-328-8994

RED-KOTE SQUARE TUBING

Mechanical and Structural

Carbon Steel

Stock Lengths: Mechanical - 20 and 24 ft.
Structural - 20, 24 and 40 ft.

Wall Gauge	Wall Decimal	Weight per ft. in Lbs.
5" x 5"		
3/16	.188	11.97
1/4	.250	15.62
6" x 6"		
3/16	.188	14.53
1/4	.250	19.02
7" x 7"		
3/16	.188	17.08
1/4	.250	22.42
3/8	.375	32.58

BLACK KLEENKOTE & RED-KOTE RECTANGULAR TUBING

Mechanical and Structural

Carbon Steel

Stock Lengths: Mechanical - 20 and 24 ft. A513
Structural - 20, 24 and 40 ft. A500 Gr. B

Wall Gauge	Wall Decimal	Weight per ft. in Lbs.
2" x 1"		
16	.065	1.269
14	.083	1.600
11	.120	2.252
3" x 2"		
11	.120	3.900
3/16	.188	5.590
1/4	.250	7.110

West Central Steel, Inc.

PHONE: 320-235-4070 DIRECT SALES FAX: 320-235-1816
1-800-992-8853 1-800-328-8994

RED-KOTE RECTANGULAR TUBING

Mechanical and Structural

Carbon Steel

Stock Lengths: Mechanical - 20 and 24 ft.

Structural - 20, 24 and 40 ft.

Wall Gauge	Wall Decimal	Weight per ft. in Lbs.
4" x 2"		
11	.120	4.75
3/16	.188	6.870
1/4	.250	8.810
4" x 3"		
11	.120	5.61
3/16	.188	8.150
1/4	.250	10.51
5" x 2"		
3/16	.188	8.150
1/4	.250	10.51
5" x 3"		
3/16	.188	9.420
1/4	.250	12.21
6" x 2"		
3/16	.188	9.420
1/4	.250	12.21
6" x 3"		
3/16	.188	10.70
1/4	.250	13.91
6" x 4"		
3/16	.188	11.97
1/4	.250	15.62

West Central Steel, Inc.

PHONE: 320-235-4070 DIRECT SALES FAX: 320-235-1816
1-800-992-8853 1-800-328-8994

RED-KOTE RECTANGULAR TUBING Mechanical and Structural Carbon Steel

Stock Lengths: Mechanical - 20 and 24 ft.
Structural - 20, 24 and 40 ft.

Wall Gauge	Wall Decimal	Weight per ft. in Lbs.
7" x 5"		
3/16	.188	14.53
1/4	.250	19.02
3/8	.375	27.48
8" x 2"		
3/16	.188	11.97
1/4	.250	15.62
8" x 4"		
3/16	.188	14.53
1/4	.250	19.02
5/16	.313	23.34
3/8	.375	27.48
8" x 6"		
3/16	.188	17.08
1/4	.250	22.42
5/16	.313	27.59
3/8	.375	32.58
10" x 2"		
3/16	.188	14.53
1/4	.250	19.02
10" x 4"		
3/16	.188	17.08
1/4	.250	22.42
3/8	.375	32.58

West Central Steel, Inc.

PHONE: 320-235-4070 DIRECT SALES FAX: 320-235-1816
1-800-992-8853 1-800-328-8994

REINFORCING BARS Available in A706 Weldable, Grade 40, Grade 60 20' Stock – Other Lengths Special Order

No.	Nominal Diameter	Wt. Per Ft. Lbs.	20' Pieces Per Ton
3	.375	.376	266
4	.500	.668	150
5	.625	1.043	96
6	.750	1.502	67
7	.875	2.044	49
8	1.000	2.670	37
9	1.128	3.400	29
10	1.270	4.303	23
11	1.410	5.313	19

West Central Steel, Inc.

PHONE: 320-235-4070 DIRECT SALES FAX: 320-235-1816
1-800-992-8853 1-800-328-8994

OPEN STEEL GRATING

Bearing bars and cross bars are joined by automatic forge-welding machines which control heat, pressure and electric current.

Result: sturdy, one-piece grating with flush top surface.

	19-W-4	19-W-2	15-W-4	15-W-2
BEARING BARS C TO C	19/16"	19/16"	15/16"	15/16"
CROSS RODS C TO C	4"	2"	4"	2"
SPECIFY FOR:	General Duty Applications	Smaller Openings	Heavier Loads, Smaller Openings	Heaviest Loads, Smallest Openings

WEIGHT IN LBS. PER SQ. FT.

Bearing Bars	Cross Bars	Type 19-W-4	Type 19-W-2	Type 15-W-4	Type 15-W-2
3/4 x 1/8	1/4	3.99	4.63	4.95	5.59
3/4 x 3/16	1/4	5.67	6.31	7.11	7.75
1 x 1/8	1/4	5.15	5.79	6.44	7.08
1 x 3/16	1/4	7.35	7.99	9.27	9.91
1 1/4 x 1/8	1/4	6.20	6.84	7.79	8.43
1 1/4 x 3/16	1/4	9.03	9.67	11.43	12.07
1 1/2 x 1/8	1/4	7.35	7.99	9.27	9.91
1 1/2 x 3/16	5/16	10.94	11.80	13.82	14.68
1 3/4 x 3/16	5/16	12.62	13.48	15.98	16.84
2 x 3/16	5/16	14.30	15.16	18.14	19.00
2 1/4 x 3/16	5/16	15.87	16.74	20.16	21.03

West Central Steel, Inc.

PHONE: 320-235-4070 DIRECT SALES FAX: 320-235-1816
1-800-992-8853 1-800-328-8994

EXPANDED METAL

Long way of diamond runs parallel to length of sheet

SIZE - STANDARD

Style Designation	Width In Inches	Length In Inches	Est. Wt. per sq. ft. in Lbs.	Est. Wt. per sheet in Lbs.
1/4 No. 20	48	96	0.86	27.52
1/4 No. 18	48	96	1.14	36.48
1/2 No. 20	48	96	0.43	13.76
1/2 No. 18	72	96	0.70	33.60
1/2 No. 16	48	96	0.86	27.52
1/2 No. 16	48	120	0.86	34.40
1/2 No. 13	48	96	1.47	47.04
3/4 No. 16	72	96	0.54	17.28
3/4 No. 13	48	96	0.80	25.60
3/4 No. 9	48	96	1.80	57.60
3/4 No. 9	48	120	1.80	72.00
3/4 No. 9	60	120	1.80	90.00
3/4 No. 9	72	96	1.80	86.40
1 1/2 No. 16	48	96	0.40	12.80
1 1/2 No. 16	48	120	0.40	16.00
1 1/2 No. 13	48	96	0.60	19.20
1 1/2 No. 9	48	96	1.20	38.40
1 1/2 No. 9	48	120	1.20	48.00
1 1/2 No. 9	72	96	1.20	57.60
1 1/2 No. 6	48	96	2.50	80.00

West Central Steel, Inc.

PHONE: 320-235-4070 DIRECT SALES FAX: 320-235-1816
1-800-992-8853 1-800-328-8994

EXPANDED METAL

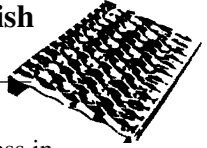
SIZES - FLATTENED

Style Designation	Width In Inches	Length In Inches	Est. Wt. per sq. ft. in Lbs.	Est. Wt. per sheet in Lbs.
1/4 No. 20	48	96	0.82	26.24
1/4 No. 18	48	96	1.08	34.56
1/2 No. 20	48	96	0.40	12.80
1/2 No. 18	48	96	0.66	21.12
1/2 No. 16	48	96	0.82	26.24
1/2 No. 16	48	120	0.82	32.80
1/2 No. 13	48	96	1.40	44.80
1/2 No. 13	48	120	1.40	56.00
3/4 No. 16	48	96	0.51	16.32
3/4 No. 13	48	96	0.75	24.00
3/4 No. 13	48	120	0.75	30.00
3/4 No. 9	48	96	1.71	54.72
3/4 No. 9	48	120	1.71	68.40
3/4 No. 9	60	120	1.71	85.50
3/4 No. 9	72	120	1.71	102.60
1 1/2 No. 13	48	96	0.57	18.24
1 1/2 No. 13	48	120	0.57	22.80
1 1/2 No. 9	48	96	1.14	36.48
1 1/2 No. 9	48	120	1.14	45.60

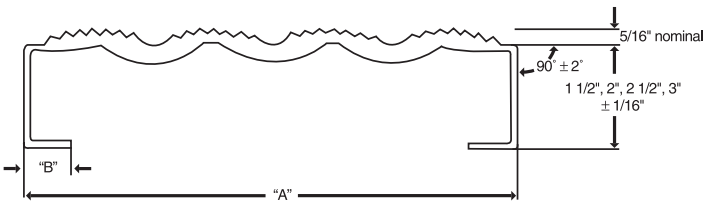
West Central Steel, Inc.

PHONE: 320-235-4070 DIRECT SALES FAX: 320-235-1816
 1-800-992-8853 1-800-328-8994

DIAMOND-GRIP® Galvanized or Mill Finish Product Description



Diamond-Grip® is a one-piece metal plank grating manufactured by a cold forming process in the shape of a channel. The web of the channel is the walking surface and has rough serrated edges around diamond shaped openings. Diamond openings are complete with radiused corners at the saddle and side channel locations.



Channel Width "A"	Return Flange "B"
4 3/4"	7/8"
7"	1"
9 1/2"	7/8"
11 3/4"	1"
18 3/4"	1"
24"	1 1/8"

**STANDARD
 LENGTHS ARE
 121.5" AND 144"**

HOT ROLLED RAIL CAP

This product is a decorative hand rail cap used by ornamental iron workers. Bends and forms easily.
 Available in 20' lengths only.

1 3/4" wide x 1.27# per ft.

West Central Steel, Inc.

PHONE: 320-235-4070 DIRECT SALES FAX: 320-235-1816
1-800-992-8853 1-800-328-8994

GRADER BLADES Single Bevel 1060 20' - 24'6" length (36' Available)

Item	Weight per Ft.	
3/8 x 3	3.33	
1/2 x 3	4.4	
1/2 x 4	6.04	
1/2 x 6	9.45	
1/2 x 8	12.89	
5/8 x 6	11.55	
5/8 x 8	16.28	
3/4 x 4	8.48	* 30' Available
3/4 x 6	13.6	
3/4 x 8	18.41	
1 x 8	25.17	

West Central Steel, Inc.

PHONE: 320-235-4070 DIRECT SALES FAX: 320-235-1816
1-800-992-8853 1-800-328-8994

WEIGHTS AND MEASURES

United States Measures and Equivalents

Length

1 inch	2.54 cm
1 foot	12 in.....0.3048 m
1 yard.....	3 ft0.9144 m
1 mile.....	1,760 yd.....1.6093 km
1 nautical mi.....	1.152 mi.....1.856 km

Area

1 square inch.....	6.4516 sq cm
1 square foot.....	144 sq in0.093 sq m
1 square yard	9 sq ft.....0.8361 sq m
1 acre	4,840 sq yd4046.86 sq m
1 square mile	640 acres.....2.59 sq km

Weight

1 ounce	437.5 grains28.35 g
1 pound.....	16 oz0.4536 kg
1 short ton.....	2,000 lb.....0.9072 tonne
1 long ton	2,240 lb.....1.0161 tonne

Volume

1 cubic inch.....	16.387 cu cm
1 cubic foot.....	1,728 cu in0.028 cu m
1 cubic yard.....	27 cu ft.....0.7646 cu m
1 fluid ounce	2.957 cl
1 liquid pint	16 fl oz.....0.4732 liter
1 liquid quart	2 pt.....0.946 liter
1 gallon.....	4 qt.....3.7853 liter
1 dry pint.....	0.5506 liter
1 bushel	64 dry pt35.2381 liter

To convert Fahrenheit degrees into Celsius, subtract 32, multiply by 5, divide by 9.

West Central Steel, Inc.

PHONE: 320-235-4070 DIRECT SALES FAX: 320-235-1816
1-800-992-8853 1-800-328-8994

WEIGHTS AND MEASURES

Metric Measures and Equivalents

Length

1 millimeter.....	0.03937 in
1 centimeter.....	10 mm.....0.3937 in
1 meter.....	1000 mm.....1.0936 yd
1 meter.....	3.2808 ft
1 kilometer.....	1000 m.....0.6214 mi

Area

1 square centimeter.....	100 sq mm.....	0.155 sq in
1 square meter.....	10,000 sq cm.....	1.196 sq yd
1 hectare.....	10,000 sq m.....	2.4711 acres
1 square kilometer.....	100 ha.....	0.3861 sq mi

Weight

1 milligram.....	0.0154 grain
1 gram.....	1000 mg.....0.0353 oz
1 kilogram.....	1000 g.....2.2046 lb
1 kilogram/meter.....	0.6719 lb/ft
1 tonne.....	1000 kg.....2204.6 lb
1 tonne.....	1.1023 short tons
1 tonne.....	0.9842 long ton

Volume

1 cubic centimeter.....	0.061 cu in
1 cubic decimeter.....	1000 cu cm.....0.0353 cu ft
1 cubic meter.....	1000 cu dm.....1.3079 cu yd
1 liter.....	1 cu dm.....0.2642 gallon
1 hectoliter.....	100 liter.....2.8378 bu
1 megapascal.....	1 Newton/sq mm 145.03 psi

To convert Celsius into Fahrenheit, multiply by 9, divide by 5, add 32.

West Central Steel, Inc.

PHONE: 320-235-4070 DIRECT SALES FAX: 320-235-1816
1-800-992-8853 1-800-328-8994

DECIMAL EQUIVALENTS

Fraction		Decimal	Millimeter	
1/16	1/32	1/64	.01563	0.397
			.03125	0.794
		3/64	.04688	1.191
			.0625	1.588
1/8	3/32	5/64	.07813	1.984
			.09375	2.381
		7/64	.10938	2.778
			.125	3.175
3/16	5/32	9/64	.14063	3.572
			.15625	3.969
		11/64	.17188	4.366
			.1875	4.763
1/4	7/32	13/64	.20313	5.159
			.21875	5.556
		15/64	.23438	5.953
			.250	6.350
5/16	9/32	17/64	.26563	6.747
			.28125	7.144
		19/64	.29688	7.541
			.3125	7.938
3/8	11/32	21/64	.32813	8.334
			.34375	8.731
		23/64	.35938	9.128
			.375	9.525
7/16	13/32	25/64	.39063	9.922
			.40625	10.319
		27/64	.42188	10.716
			.4375	11.113
1/2	15/32	29/64	.45313	11.509
			.46875	11.906
		31/64	.48438	12.303
		.500	12.700	

West Central Steel, Inc.

PHONE: 320-235-4070 DIRECT SALES FAX: 320-235-1816
1-800-992-8853 1-800-328-8994

DECIMAL EQUIVALENTS

Fraction		Decimal	Millimeter	
9/16	17/32	33/64	.51563	13.097
			.53125	13.494
		35/64	.54688	13.891
			.5625	14.288
5/8	19/32	37/64	.57813	14.684
			.59375	15.081
		39/64	.60938	15.478
			.625	15.875
11/16	21/32	41/64	.64063	16.272
			.65625	16.669
		43/64	.67188	17.066
			.6875	17.463
3/4	23/32	45/64	.70313	17.859
			.71875	18.256
		47/64	.73438	18.653
			.750	19.050
13/16	25/32	49/64	.76563	19.447
			.78125	19.844
		51/64	.79688	20.241
			.8125	20.638
7/8	27/32	53/64	.82813	21.034
			.84375	21.431
		55/64	.85938	21.828
			.875	22.225
15/16	29/32	57/64	.89063	22.622
			.90625	23.019
		59/64	.92188	23.416
			.9375	23.813
1	31/32	61/64	.95313	24.209
			.96875	24.606
		63/64	.98438	25.003
		1.00000	25.400	

West Central Steel, Inc.

PHONE: 320-235-4070 DIRECT SALES FAX: 320-235-1816
1-800-992-8853 1-800-328-8994

FORMULAS

West Central Steel, Inc.

PHONE: 320-235-4070 DIRECT SALES FAX: 320-235-1816
1-800-992-8853 1-800-328-8994

FORMULAS

ELLIPSE

Area = short diameter x long diameter x .78545

HEXAGON

Area = width of side x 2.598 x width of side

PARALLELOGRAM

Area = base x distance between the two parallel sides

PYRAMID

Area = 1/2 perimeter of base x slant height + area of base

Volume = area of base x 1/3 of the altitude

RECTANGLE

Area = length x width

RECTANGULAR PRISM

Volume = width x height x length

SPHERE

Area of surface = diameter x diameter x 3.1416

Side of inscribed cube = radius x 1.1547

Volume = diameter x diameter x diameter x .5236

SQUARE

Area = length x width

TRIANGLE

Area = one-half of height times base

TRAPEZOID

Area = one-half of the sum of the parallel sides x the height

West Central Steel, Inc.

PHONE: 320-235-4070 DIRECT SALES FAX: 320-235-1816
1-800-992-8853 1-800-328-8994

West Central Steel, Inc.

PHONE: 320-235-4070 DIRECT SALES FAX: 320-235-1816
1-800-992-8853 1-800-328-8994

West Central Steel, Inc.

PHONE: 320-235-4070 DIRECT SALES FAX: 320-235-1816
1-800-992-8853 1-800-328-8994

West Central Steel, Inc.

PHONE: 320-235-4070 DIRECT SALES FAX: 320-235-1816
1-800-992-8853 1-800-328-8994
